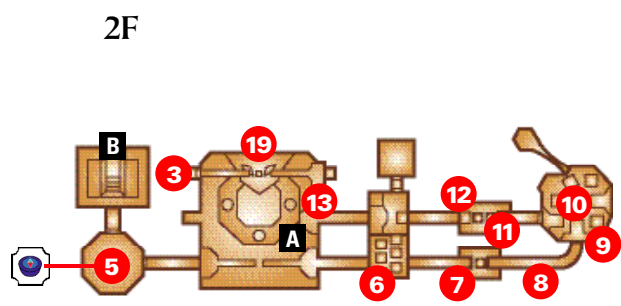
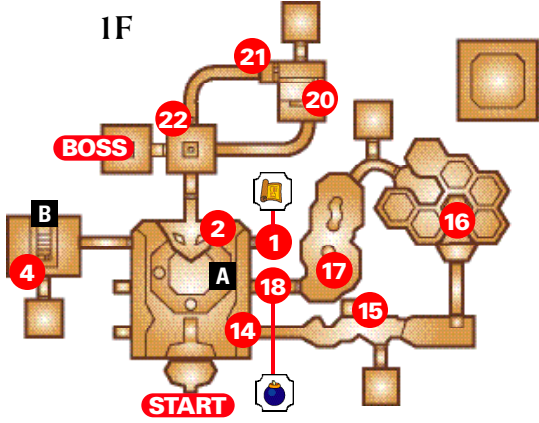




Dodongo's Cavern Map



Map Key 1 Strategy Callout A Floor Connection Map Compass Bomb Bag

1 COLLECT THE MAP

You will find a Bomb Flower growing in the middle of the main room. Jump across the moving platform and pick a Bomb from it. Quickly jump across the moving platform to the right while carrying the Bomb and throw it at the stone door at Callout 1. Time your jump over the moving platform so that you get across the gaps when it's at its highest point. Behind the door is a large treasure chest containing the Map to Dodongo's Cavern.



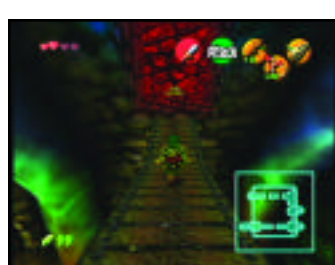
2 BENEATH THE BOULDER

Return to the middle of the room and pick up another Bomb. Drop down and throw the Bomb at the boulder at Callout 3. Underneath it is a switch that will turn one of the moving platforms into an elevator to the 2nd Floor of the main room. Jump onto this platform and ride it up.



3 UNLOCK THE DOOR

Cross the bridge that hangs over the giant Dodongo statue. At the other end is a switch that will unlock the door directly below you. Jump down to the 1st Floor and go through the unlocked door.



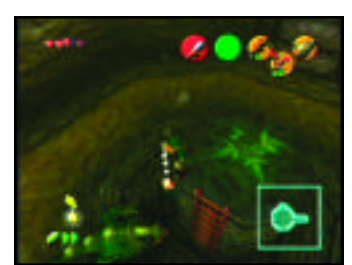
4 CREATE A JUMBO STAIRCASE

Start a chain reaction with the Bomb Flowers surrounding the cement block to gain access to the 2nd Floor of this room. The Bomb Flowers need to detonate with one try, so you need to use a separate Bomb Flower. First, pick a Bomb and throw it at the stone door at Callout 5 to destroy it. A Bomb Flower on the wall will be revealed. Light a Deku Stick and ignite the Bomb Flower on the wall. Pick it up and place it in the blank spot between the two rows of Bomb Flowers. The reaction will create a staircase which leads to the 2nd Floor. To unlock the door on the 2nd Floor, locate five Silver Rupees hidden in the room. One Silver Rupee is hidden inside a Beamos. Pick a Bomb Flower, then L-Target the Beamos and throw a Bomb to defeat it. Three Silver Rupees are hidden inside crates. Climb the vines near the locked 2nd Floor door to collect the last Silver Rupee to unlock the door.



5 FEED THE DODONGOS

To reveal a large treasure chest with the Compass and unlock the next door, you need to eliminate all of the Dodongos in the room. Climb the ladder on the middle platform, then pick Bomb Flowers and drop them over the ledge in front of the Dodongos. When they swallow the Bombs, they'll blow up. Their explosion radius is large, so stay as far away as you can when they blow up. After you've collected the Compass, go through the door and cross the bridge over the main room.



6 TRICKY TORCH LIGHTING

Your first task is to light the torch on the platform in the middle of the room. You cannot accomplish this with a Deku Stick. Instead, move a block underneath each of the unlit torches on the pillars. Climb up the ladder and light a Deku Stick, then jump to each block to light the other three torches. When they are all burning at the same time, the torch on the platform will ignite.



7 REMOVE THE COBWEBS

Pull the block out of the wall at Callout 8 to gain access to a ladder. You'll be able to jump back to the platform with the newly lit torch. Take a lighted Deku Stick to the next room and burn the cobwebs away before dealing with the other torches there.



8 CONTINUE THE CHAIN OF TORCHES

Light another Deku Stick and head back to where you burned away the cobwebs. Light the first torch, then put away the Deku Stick. Defeat the Skulltula and light another Deku Stick before the lighted torch burns out. Set another Deku Stick on fire and light the nearby torch (You need to move quickly to accomplish this). When another torch in the hallway on the other side of this room starts to burn, jump down and move the block to the other side of the room. This will allow you to continue on.



9 THE BOMB FLOWER ON THE WALL

Eliminate the Keese and Skulltula in the hallway first. Light a Deku Stick and use it to ignite the Bomb Flower on the wall. Pick up the Bomb and throw it at the stone wall to break it open.



10 LIZALFOS DOUBLE TEAM

When you enter this room the door will lock behind you. To unlock the doors you need to defeat the two Lizalfos. They will only attack you one at a time, so try to stay in one spot. When the Lizalfos attacks, block its strikes with your shield then retaliate. After a few hits, it will leave and the other one will attack.



11 STOP THE FIRST FLAME

You will be quick to get through this room, so drop down and remove the two crates and eliminate the two Keese as quickly as possible. You'll find one Keese is in the alcove where the Bomb Flower is located. Activate the Crystal Switch to shut off the first wall of flames for a short period of time. Jump to the platform, then to the alcove with the Bomb Flower at Callout 11.



12 GET ACROSS THE ROOM

Pick the Bomb Flower and use the Bomb to destroy the boulder at Callout 12. This will reveal a switch that shuts off the second wall of flame for a brief amount of time. Hit the switch, then activate the Crystal. Quickly climb back up and jump across the two platforms before the walls of flame reappear.



13 OPEN A NEW PATH

Follow the path to Callout 13 and pick the Bomb Flower to destroy the boulders blocking your way. Pick up the small treasure chest to your left when you pass through the room where you lit the three torches.



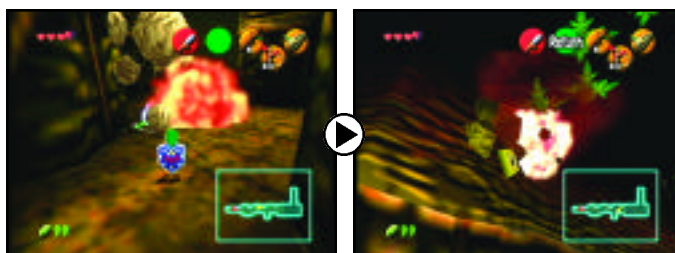
14 OVER THE EDGE

Pick the Bomb Flower again and take the Bomb with you over the edge to the left. On the 1st Floor, quickly throw the Bomb at the stone wall at Callout 14 before it blows up. If at first you don't succeed, ride the moving platform back up and try again.



15 ANOTHER CHAIN REACTION

Climb onto the left block and ride it up to the Bomb Flower. Pick the Bomb Flower and use the Bomb to destroy the nearby boulder, which reveals another Bomb Flower. Pick this Bomb Flower and throw it at end of the line of Bomb Flowers growing on the wall and ceiling. The chain reaction will uncover an eye switch. Activate the eye switch with your Fairy Slingshot to unlock the door to the next room. Watch out for the Flame Keese in this room. If you have your Deku Shield equipped, the Flame Keese can burn it up. If you have a spare empty bottle, there is a Deku Scrub behind a breakable stone wall that will sell you a Red Potion.



16 ANOTHER TEAM OF LIZALFOS

These Lizalfos are no different than the last pair you defeated. Defeat another team of Lizalfos to unlock the doors so you can continue. Block their strikes with your shield, then retaliate with the stronger jumping attack to eliminate them quickly.



17 A ROOMFUL OF POES

Avoid fighting the Poes in this room. It takes patience since you can only strike when they are visible. Focus on igniting the row of Bomb Flowers growing up the wall at Callout 17, which will unlock the door. You will find a Bomb Flower next to a crate on the far side of the room that you can use.



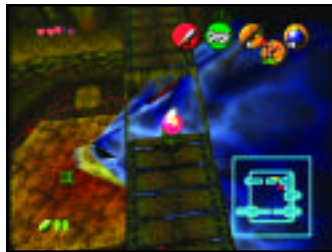
18 YOU'VE GOT BOMBS

Through the door you will see a large treasure chest. This is the chest that you couldn't reach when you first entered the main room of Dodongo's Cavern. Inside you will find the Bomb Bag, which allows you to carry Bombs.



19 THE EYES OF THE STATUE

Take the moving platform up to the 2nd Floor and walk to the middle of the bridge above the statue. There are two holes just above the eyes. Equip your Bombs to the C-Stick and drop one through each hole. The eyes will glow red and the mouth will open to reveal a new passage.



20 PULL THE GRAVESTONE

After entering the mouth of the statue, take a right and head through the hallway to the room at Callout 20. Defeat the Lizalfos and pull the gravestone near the wall of flames. Use the gravestone as a ramp to help you throw a Bomb over the wall of flames. When it blows up a Crystal Switch will be activated, turning the flames off and allowing you to continue. When you enter the room to the right, it will lock you in. Defeat the Poe to unlock the door, and then pull the gravestone back to reveal a small treasure chest.



21 GET PAST THE ARMOS ARMY

Throw a Bomb near the wall of Bomb Flowers to start a chain reaction. It will activate a Crystal Switch on the other side of the group of Armos. The Crystal Switch will reveal an extra step needed to get to the door. Throw another Bomb into the middle of the Armos to get them moving away from the steps so you can climb to the door.



22 THE FINAL SWITCH

At the end of the hallway, pull the gravestone to reveal a switch. Hit the switch to unlock the last door. The next room is empty, but if you place a Bomb in the middle of the floor, you can blow open a hole that leads to the Boss. Collect the small treasure chest nearby and jump into the hole.



BOSS KING DODONGO

Keep a safe distance and wait for King Dodongo to open its mouth. Throw a Bomb inside its mouth and wait for it to explode. It will be temporarily stunned, allowing you to strike its head with your sword. Get a good hit in, then move close to the lava pool to avoid getting hit when it starts rolling. Repeat this process until King Dodongo is defeated.



BROUGHT TO YOU BY:

NINTENDO
POWER

FOR SUBSCRIPTION INFORMATION, VISIT:
http://www.nintendo.com/news/news_power_promo.jsp